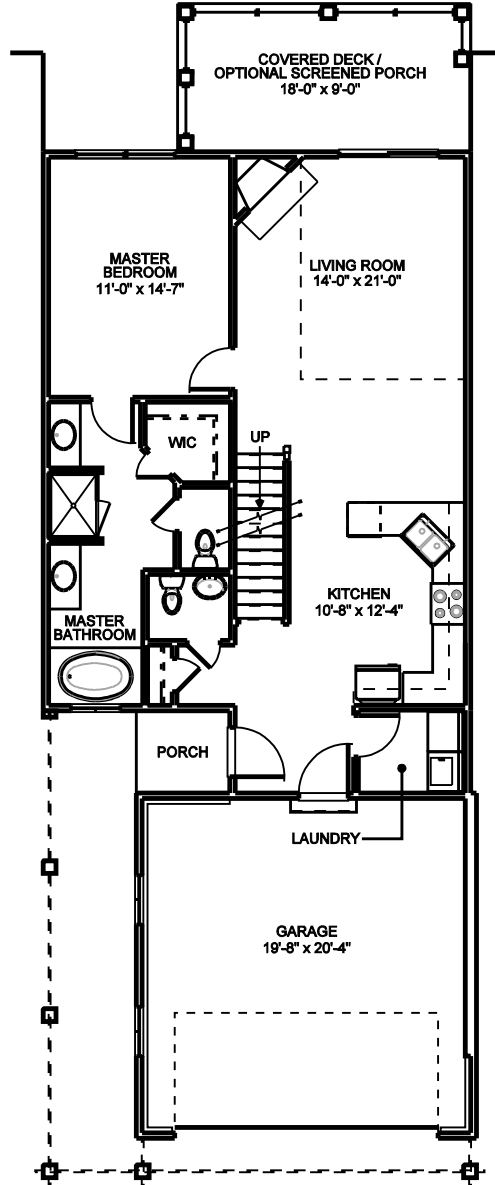
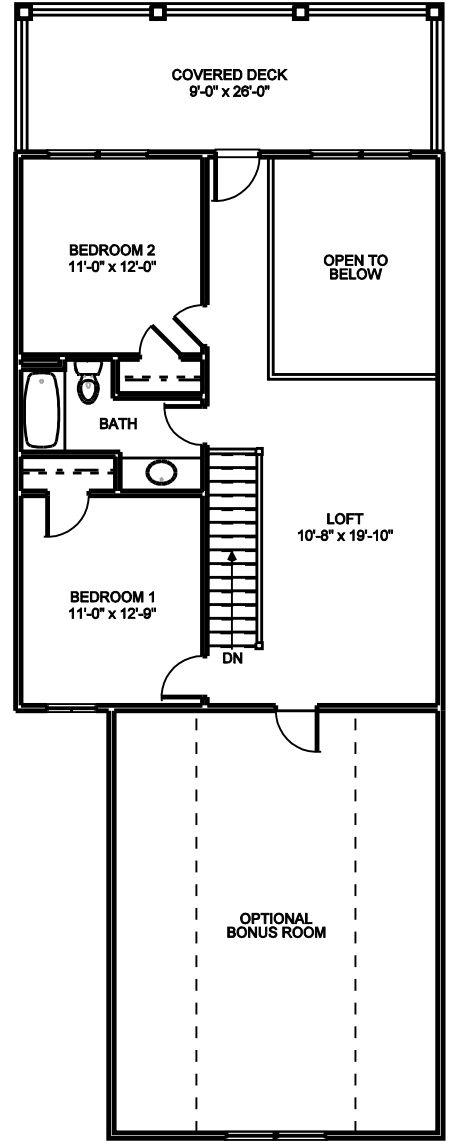


LOWER LEVEL



FIRST FLOOR



SECOND FLOOR

SPECIFICATIONS OF UNIT "B"			
FOUNDATION	FULL BASEMENT	BEDROOMS	3
FIRST FLOOR S.F.	962 S.F.	BATHROOMS	2 1/2
SECOND FLOOR S.F.	845 S.F.	GARAGE:	2 CAR
TOTAL LIVING AREA	1,807 S.F.	HOUSE	26'-0" x 69'-0"